



THE BULLETIN



Published by the Scovill Manufacturing Company for its Employees.

Vol. XXXX

November 19, 1956

No. 22

Safety Committee Visits Scovill



Recent visitors to Scovill were the members of the Safety Sub Committee of the Labor Committee of the Copper and Brass Research Assoc. This committee consists of men from various industries who promote accident prevention in the brass industry. W. J. McChesney, Safety and Fire Eng., represents Scovill.

Blood Donor Day "Holiday Special"

Employees of the East Plant are being asked to participate in the "Holiday Special" Blood Donor Day to be held on Tuesday, December 18, at Doolittle Hall. All other employees and members of their families are also invited to give.

Departments especially concerned are: Casting Shop, Hydro Press, Extruded Rod Mill, Tube Mill, Continuous Strip Mill, Steam Dept., Salvage, Metals Research, East Machine, Electrical, Plant Prot. and various offices.

New Assignments

Closure Division

Announced by Mr. J. G. Wolff, Works Manager, Closure Division.

Effective November 5, 1956, Mr. Alexander A. Andrews was relieved of his present responsibilities in the Slide Fastener Dept. and was appointed Superintendent of the Clarkesville Plant in Georgia. He will report to Mr. G. M. Williams, Jr., Plant Mgr.

Mills Division

Announced by Mr. C. P. Goss, Manager, Mills Division.

Effective November 5, 1956, Mr. Robert L. McLaughlin was appointed Manager, Marketing Research, Mills Division. He will report to Mr. Maurice Liston, Jr., Assistant to the Manager, Mills Division Sales.

Molly Cipriano Retires

MOLLY CIPRIANO, Cutting Room, was retired from active service as of November 13, 1956.

Mrs. Cipriano was hired in November, 1916, but due to periods out of the plant her continuous service record began in July, 1939. She served in the Fuze Dept. and Closing Room prior to going to the Cutting Room in 1933 where she was a power press operator when illness forced her to leave in April.

The members of the Safety Sub Committee of the Labor Committee of the Copper and Brass Research Association who were recent visitors to Scovill, toured the Mills.

This committee holds its meetings at the various mills its members represent. Safety and Fire Engineer William J. McChesney, who is a member of the committee, represents Scovill at these meetings, thus Scovill served as host for the October meeting.

Following the tour and lunch, the meeting was held in the Display Room. In the above photo: (left to right) J. M. Burrall, Manager, Dept. of Employee Relations; F. L. Scovill, Association representative of the Copper and Brass Research Association; John Fogarty, Mill Production Office; G. W. O'Neill, American Brass Co., Waterbury; C. L. Rienzo, Revere Copper and Brass, Inc., Rome, New York; John Pyatt, Safety Dept.; Mr. McChesney; W. S. Visokay, Bridgeport Brass Co.; F. A. Gerard and E. P. Fappiano, both of Olin Mathieson Chemical Co., New Haven.

Kids Christmas Party

Again this year the Scovill Girls' Club, with the assistance of the SERA, will sponsor the annual Children's Christmas Party. All Scovill children and grandchildren between the ages of 2 and 10 years are invited to attend.

In order to accommodate all reservations, the parties will be held on two days, Saturday and Sunday, December 22 and 23, from 2:00 to 4:00 p. m. at Doolittle Hall with a limited attendance of 500 children each day.

Reservations must be in by Friday, December 14, in order to arrange for refreshments and a gift for each child.

Tickets will be issued on the basis of: the first 500 reservations received will be given tickets for Saturday unless Sunday tickets are desired; the remainder to receive Sunday tickets. They may be obtained at the Employee Activities Office, Employee Relations Building, 2nd Floor.

Who Sets Prices?

When a new, useful product is produced and goes on the market it will command wide acceptance at pretty near any price it is marketed at. That is because people want it. They must pay the price that has been set or go without. The producer of such an item undoubtedly makes far more than a normal profit while he is alone in the market.

But when any new product gains the wide acceptance of consumers, other producers want in. Through research and experiment someone else develops a similar product, or one that will do the same job. In order to get a share of the market he prices his product under the price set by the original producer.

And then a third and fourth producer get into the act. The market price goes down. It finally stabilizes at a price at which the most efficient producer can sell. If the less efficient producers cannot do business at a profit at the stabilized price, they withdraw their product from the market.

But in the long run it is competition which sets the price, and not the whim of one producer.

Alan C. Curtiss
Vice President

Thanksgiving Shutdown

Waterbury Divisions

The Waterbury Divisions will close at the end of the work day on Wednesday, November 21, 1956, for the Thanksgiving holiday and will reopen with the start of the first shift on Monday, November 26.

Employees scheduled to work on Friday, November 23, or Saturday, November 24, will be notified individually or by departmental notice.

Employees regularly paid on Thursday or Friday will be paid Wednesday, Nov. 21, at their work places.

The back pay station will be open on Wednesday, November 21, from 12 noon to 3:30 p.m., but will not be open on Friday, November 23.

Waterville Division

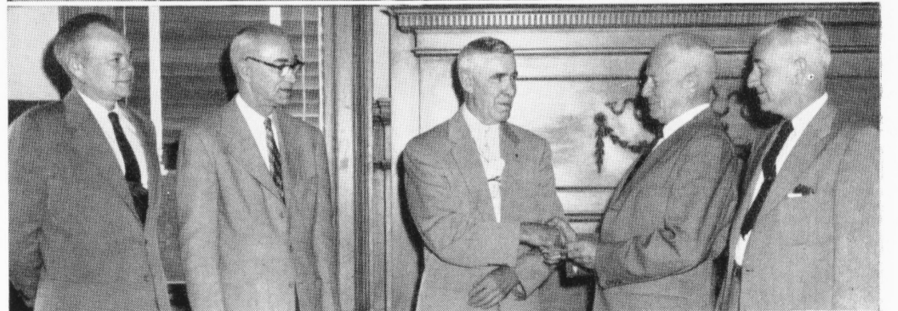
The Waterville Division will close at the end of the workday on Wednesday, November 21, and will reopen with the start of the first shift on Monday, November 26.

Any deviation from this schedule will be authorized by the Plant Mgr.

Pay for the week ending November 18 will be distributed on Wednesday, November 21.

Thanksgiving is one of the seven holidays for which hourly and piecework employees, who qualify, are paid when they do not work.

Two 40-Year Awards Presented



Top photo:—Nunzio Levegnale, Buff I, who recently completed 40 years of continuous service at Scovill, accepts his award and pin from President W. M. Goss. On hand for the occasion were (extreme left) Works Mgr. Chester A. Burnett, (right) Gen. Foreman Leon H. Maysbaw, Foreman Thomas A. Lynch.

Bottom:—Garrett W. Casey, Mfg. Packing, also receives his 40-year award. Making the presentation is Vice President and General Manager of the Waterbury Divisions Arthur P. Hickcox. Looking on are (left) Factory Supt. George L. Chase, Foreman Charles A. Pulford and (extreme right) Mr. Maysbaw.

THE BULLETIN

Published by the Scovill Manufacturing Company for its Employees.

99 Mill Street, Waterbury, Connecticut

Managing Editor: MARGARET E. FENSKE

Art Editor: GEORGE E. SLATER

Photographers: Earle C. Pierce, Adam Wolak

Contributing Staff:

Louise Foell, Charlie Rietdyke, Teresa Ryan

"We pledge ourselves to investigate thoroughly for accuracy before publication the material presented in THE BULLETIN."

Vol. XXXX

November 19, 1956

No. 22

Mail Early For Christmas

Postmaster William J. Phelan believes a word or two to the wise will help make your Christmas and those of your friends and loved ones as merry as it should be. With Christmas just about a month away, the Post Office is geared up right now to insure the delivery of all gift packages and Christmas cards by December 25th, but your cooperation is essential.

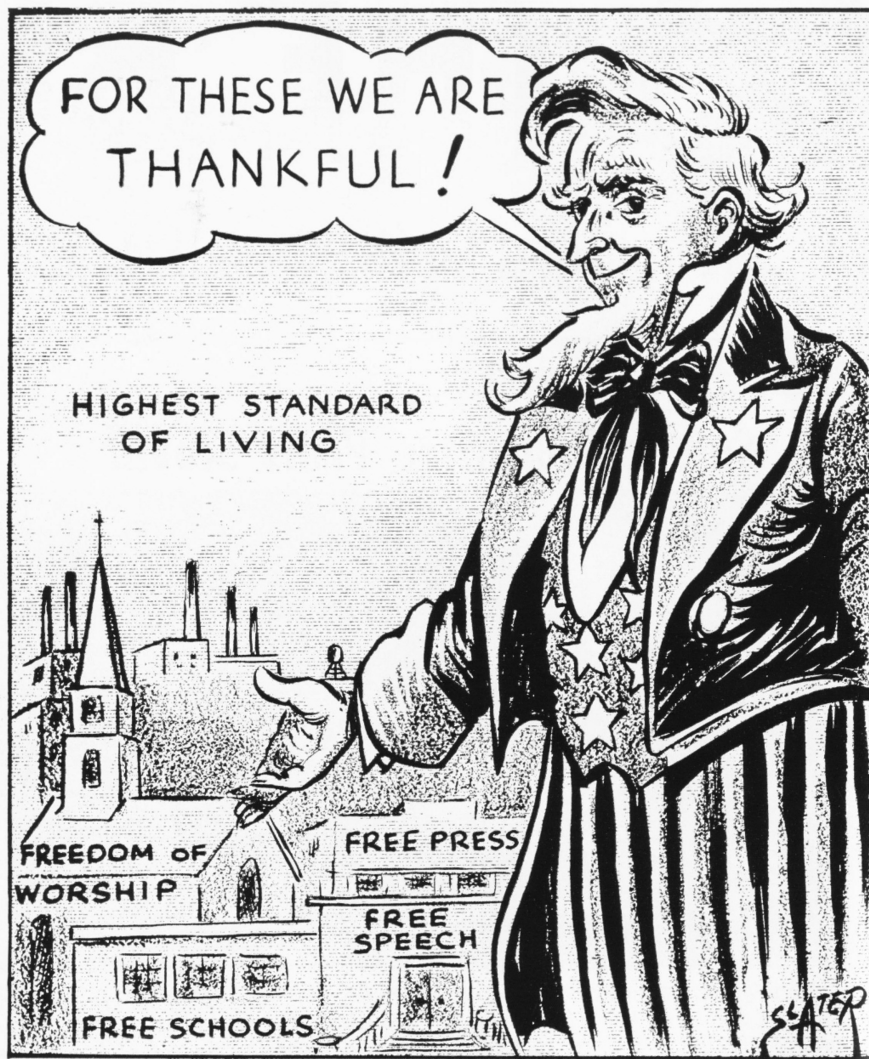
Speaking about his plans, the Postmaster said, "There's about 167 million people in this country today. More than ever before. More people means more Christmas mail. That's why it's so important to have a helping hand from the public to Mail Early for Christmas."

Predicting that this year's Christmas mail will set a new all time record, the Postmaster urged that you take the following steps at once: Check your Christmas card lists very carefully, make sure that each address includes the full name, street and number, city, zone and state. Stock up on stamps at the same time. Also ask for free labels reading *All for Local Delivery* and *All for Out of Town Delivery*, so that you can speed arrival of your Christmas cards by sorting and tying them in two separate bundles with the addresses all facing one way. A modest investment in heavy wrap-

ping paper, sturdy empty cartons, strong cord and craft paper adhesive tape will pay big dividends in safe deliveries of your cherished Christmas gifts.

If you'd like to include your Christmas cards or letters inside the packages with your gifts, just add the appropriate First Class mail postage to the postage for the packages themselves. This combination mail service recently introduced by the Post Office Department insures simultaneous arrival of your gifts and greetings. Remember that only Christmas cards carrying three cents, or six cents Air Mail Postage, may include a personal message. Nothing more than a signature is authorized on cards mailed at the two cent Third Class rate, and be sure that your return address is on every Christmas card envelope. This is socially correct and helps both you and your friends to keep your mailing lists up-to-date.

After your gift wrapping and packing is complete and your Christmas cards are addressed and stamped, plan your mailings so that those for the most distant points go first. Try to get all *long distance mailings* into the Post Office before *December 10th* and those for *nearby points* should be mailed by *December 15th*.



One In A Million

By Robert W. Butler, M. D.

If you have diabetes and don't know it, there are 999,999 others in this country in the same fix. And it is a fix because untreated diabetes can be serious to the point of disaster — and how can you treat it if you don't know you have it?

There is another million who have it, know it, and are receiving treatment; so the best available figures would indicate that there are about as many diabetics in the country as there are people in the entire State of Connecticut.

So what is it? Normally, sugar is used in the body to produce heat and energy. The sugar and starches which you eat are converted chemically by the digestive juices into simple sugars which enter the blood-stream through the capillaries in the walls of the intestine.

What you need at the moment is used right then; and what you don't need is stored in the body (a sort of savings bank proposition) to be called upon when the need arises. If you take in more than the body can use and store, another chemical change takes place and it's stored up as fat. (That's a bank deposit of value only to bears and other hibernating animals who go to sleep and live off it all winter.)

The use of sugar in the body is controlled by insulin — a substance produced by the pancreas which is a gland lying in the abdomen behind the stomach. When it fails to produce enough insulin to take care of the sugar needs of the body, the sugar in the blood is filtered out in the kidneys and escapes in the urine. Since this sugar is being wasted rather than being converted into energy, the individual with untreated diabetes becomes tired easily, and loses weight.

Those are only a couple of the symptoms. There are several others equally important:

- Increase in thirst
- Slow healing of cuts and scratches
- Frequent urination

Itching

Constant hunger

All of us are fair game for this disease, but it does run in families, and you have a better chance of developing it if you're overweight, over 40, or if you're a woman. Just remember that you don't *have* to be *any* of these to develop it.

So what about it? The what-about-it is this:

If you have it and don't know it, you will very likely be in for serious trouble.

If you have it and *do* know it, and if you follow your doctor's directions regarding diet, insulin and exercise, you will very likely have *no* trouble; and that's what we can all take in large doses!

So you should have your urine tested for sugar at regular intervals to be on the safe side. If it's all right, so are you; and if there's sugar in it and you get prompt treatment, you're still all right. What is there to lose?

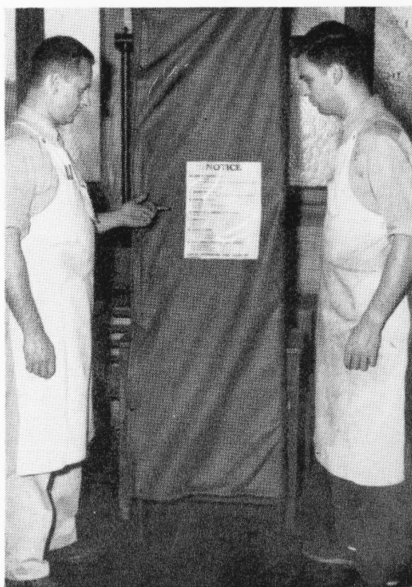
We're a week late for the Diabetes Detection Drive which just ended. This has become an annual national institution during the last several years in which the public is urged to take advantage of an opportunity to have urine tests made without charge.

We may be a week late for the drive, but we'll still do what we can. If you want to have a test made *this* week, leave a small bottle of urine at any of the plant hospitals and it will be done for you; and if sugar is found, we'll let you know without delay.



Alfred J. Bronsard, Planning
Robert E. Lee, Slide Fastener Tool

Stretchers Carry First Aid Reminders



Left:—Charles Rimkus points out to Richard Feest, both of Electric Shell, a poster on first aid reminders which he suggested should be attached to all the stretchers in Scovill. This notice (right) lists the key points in caring for possible stretcher cases.

Memorize these six basic rules. They may be of value to you not only in the plant but also for emergencies which may arise outside the plant.

Read these points, remember them and learn how to use them; it may save someone's life some day.

Notice

In Case of Severe Injury:

1. Do not rush!
2. Notify nearest plant hospital, and do not remove from area unless so instructed.
3. Use extreme care in handling patient.
1. **Severe Bleeding**
Control with firm compress bandage —tourniquet, if necessary, of soft material only.
2. **Electric Shock**
Free from electrical contact.
If not breathing, start artificial respiration.
Keep warm.
3. **Fractures—(Obvious or Suspected)**
Do not move!
4. **Fainting**
Keep head low.
Keep warm.
5. **Convulsions**
Do not forcibly restrain, but:
(a) Guide movements of head and arms to prevent injury.
(b) Place gag between teeth to prevent biting of tongue.
6. **Heat Exhaustion or Heat Stroke**
Keep patient lying down.
If skin is cold, provide warmth.
If skin is hot, provide cooling.

Give All Information When Calling The Hospital!

Service Awards

Fifty Years



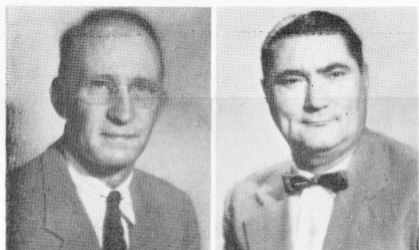
Arthur H. Lanouette
Waterville
November 19, 1956

Forty Years



Nunzio Levegnale
Buff I
November 6, 1956

Twenty-Five Years



Roger Makepeace
Exec.-General
Nov. 6, 1956

Joseph Izzo
Annealing
Nov. 11, 1956



Arthur Lertz
Tube Mill
Nov. 19, 1956

Antonio Santos
No. Mill Finish
Nov. 19, 1956

Ten Years

Nov. 7 — Joseph Donabue, Slide Fast. Tool; Harold Reed, Tube Mill; Nov. 8—Joseph Leone, Buff I; Nov. 9—Prima Izzo, B & F Sales; Nov. 13 — Charles Carpentier, Waterville; Nov. 16—Barbara Kiudulas, Connector; Nov. 19—Rose Damico, Hot Forge; Adele Kay, New York.

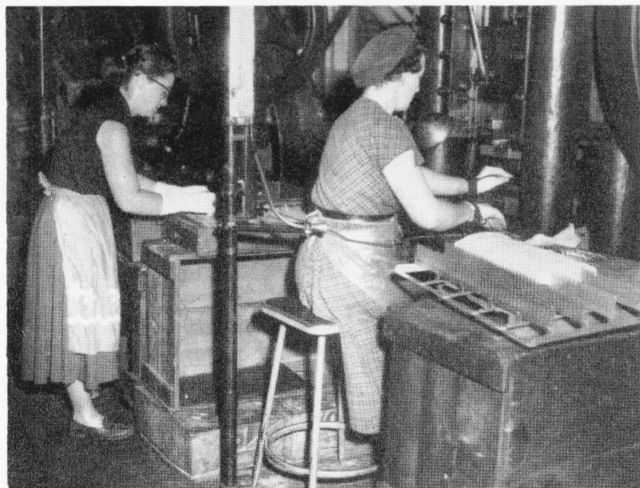
Tin Shop's 11th Annual New Year's Eve Party

The Tin Shop will hold a New Year's Eve dinner - dance for its eleventh consecutive year. All interested in attending are asked to get their tickets as soon as possible as this affair is always well attended and tickets are limited.

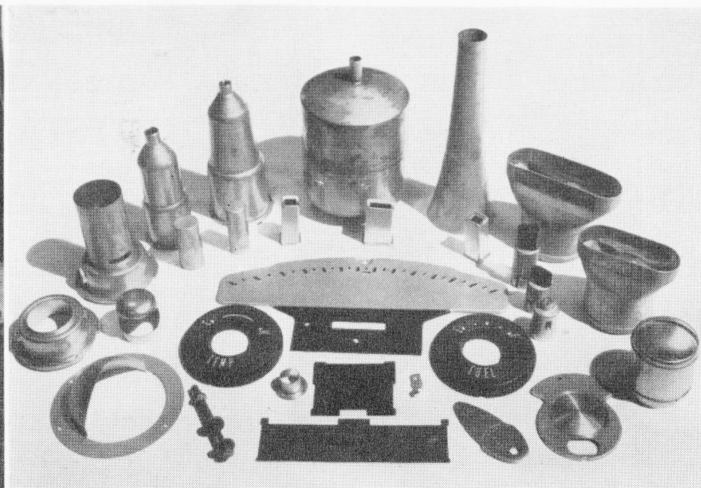
Doolittle Hall will be the scene of the affair and Joe Rock's orchestra will provide the music for dancing from 9 p. m. to 2 a. m.

Anyone interested in either tickets or further information is asked to get in touch with any of the committee members — John Capone, Art Graveline, Hector LaRiviere or Fred Milano — or call ext. 2103.

Scovill Contributes To The Motoring Nation



Left photo:—In Press I Angela Cedela (left) helps Mildred Kellas set up for an operation in the production of 1957 Ford speedometers (centered in the right photo).



Right photo:—These odd looking pieces are a few of the automotive parts made by Scovill used by such motoring industries as Ford, Chrysler and General Motors.

1957 Ice Follies

Discount tickets for the 1957 Ice Follies, to be held at the New Haven Arena, may be obtained at the Employee Activities Office. These tickets are for the evening performance on Sunday, December 9. The \$4.80 seats may be obtained for \$3.60; \$3.60 seats for \$2.70; \$2.75 seats for \$2.10.

Tickets may be obtained for the evening performances running Monday through Saturday, December 10 to 15, at the regular prices of \$3.60 or \$4.80 also for Saturday and Sunday matinees, December 15 and 16. The \$2.75 tickets may be had for any performance.

Fishing Notes

The annual fishermen's banquet brought to a most successful close one of the finest fishing seasons ever enjoyed by Scovill fishermen.

Starting with one of Fred Wilson's famous steak dinners, deliciously prepared, the holiday mood of the sportsmen was clearly evidenced in the manner in which they responded to the activities of the evening.

Head table guests who briefly addressed the gathering were Vice President Alan C. Curtis, Judge Francis F. Reeves, SERA President Albert Kean, Rod and Gun Club President Henry Miller, Chairman of the SERA Fishing Committee Ray Ladden, Scovill Fisherman Emeritus Jim Littlejohn as well as Harold Burr of Sealtest and Eli Duville of A.B.C. Vending Corp.

Ray Ladden announced the annual competition winners. Because of a tie for the top position we now have co-champions, John Matulunas and Nelson Smith. Thirty other fishermen finished "in the money".

A thrilling professional movie sporting show concluded a very satisfactory and delightful evening. Charlie Rietydyke, acting as M.C., piloted the meeting.

Girls' Club News

By Teresa Ryan

Mrs. Alida Sevigny, who recently retired, was pleasantly surprised with a dinner party given by her co-workers of Packing A. She was presented a traveling bag and a lovely set of earrings and a pin. Elizabeth Guilfoile, Mary LaFrance, Nellie Geddes and Theresa Sheldrick, all retired, also attended the festivities.

We are sorry to hear that Mollie Collins, Trucking, suffered a broken wrist. She is now recuperating at home.

Mary Winton, Waterville, is convalescing at her home after a stay in St. Mary's Hospital.

Mr. and Mrs. Gaylord, (Pat O'Mahoney) have returned from Florida where they spent their honeymoon.

Frances O'Rourke, Lipstick, spent the weekend with her sister Mrs. Michael Monning of Hartford.

Margaret Snowden spent Armistice week-end shopping in New York.

Happy Birthday greetings to Catherine McCormack of the Cost Office.

We extend our deepest and sincerest sympathy to Mrs. Mary Grady, Slide Fastener, on the death of her father.

Christmas cards and paper are available at the SERA salesroom.

Included in Scovill's wide field of production is the automotive division. Although we don't actually produce cars we are suppliers of many vital parts for such producers as Ford, General Motors and Chrysler. It takes the combined contributions of the motor companies plus their suppliers, such as Scovill, to produce the finished item.

During the Ford exhibition entitled "Partners in Production" held recently at the Ford Rotunda in Dearborn, Michigan, Scovill was listed as a supplier on a central display as a tribute to its contribution to the Ford industry.

Not many people realize that Scovill plays a vital part in the automotive industry. This holds true mainly because the parts we make, which go through the various departments such as the Eyelet Room, Trim and Knurl, Aluminum Finish, Lacquer, Lipstick, Press Rooms, Annealing and Packing Room, are unrecognizable by the vehicle owner even though they are vital to the operation of the car or truck.

Pictured in the right photo are some of the items made at Scovill, including such parts as push button gear-shift control parts that are used by Plymouth. The parts for Ford include

inlets and fillernecks for the radiator, speedometer and the dash board dials. Fillerneck assemblies are also used by General Motors as well as fuel injector sleeves in General Motors diesel engines. Chevrolet uses parts we make for their 1957 heater control panel and dome lights.

Other parts that we produce for various automotive customers include such items as gas pumps-floats, condenser shells, fuel pump shafts, truck tail light sockets and head light switch terminals, plus various small parts for the transmission. Automatic Screw Machine Division also makes many parts for carburetor and speedometer assemblies. The Waterville Division is a major producer of headed and threaded parts for car assembly use.

Scovill Retreat Group

Approximately 130 Scovillites have signed up for the retreat to be held at the Holy Family Retreat House in Farmington, Connecticut, from November 23 to 25.

Those who have not signed up, but would like to attend, may still do so by getting in touch with Chairman John Capone at ext. 2103.

Foremen's Fall Dinner-Dance



The Scovill Foremen's Association recently held their fall dinner-dance at the Waterbury Country Club. Pictured above are a few of the eighty-seven couples that attended the affair. A wonderful dinner was enjoyed followed by an evening of dancing to the music of Francis Delfino and his orchestra.

First-Place Winner And Award In State-Wide Contest



Jim Sutton (left) first-place winner in the recent state-wide contest for apprentices, accepts his certificate (pictured at right) and prize from contest chairman John D. Dewhurst (Arrow Tool Co.) at the National Tool & Die Mfrs. Assoc. convention at the Hotel Statler in Hartford.

Robert Anderson (center in photo) foreman of Hot Forge Tool, accepted the "Excellence in Training" certificate which was awarded to Scovill.

Jim was one of approximately 100 apprentices throughout the state of Connecticut to compete in the contest which was sponsored by the Central Conn. and Southern Conn. Tool and Die Associations; Manufacturers' Association of Conn.; the State Dept. of Education; and the Federal Bureau of Apprenticeship, Dept. of Labor.

Two other Scovillite trainees ranked in the top 25 who were qualified to participate in the finals, an intensive on-the-job examination. They were Patrick Julian and Robert Montory, both of the Waterville Div.; each received honorable mention.

In recognition of their outstanding achievement, each boy was given a Savings Bond by the Scovill Company.

Pinochle Tournament

Matulunas' pinochle team came through with the highest score for the evening of play on November 8 with 31,220 points; followed by Laudate's team with 27,330 points and Mancini's team with 26,250 points.

Individual high honors for the evening went to Charles Rimkus with 5,200 points and Archie Hollywood with 4,290 points.

Holiday Gifts Ideas Theme Of Nov. 28 Show

The SERA is sponsoring a special event for the ladies on Wednesday, November 28, 1956, at the Scovill Girls' Clubhouse.

Mrs. Reata Ridolfo of G. Fox & Company, Hartford, will show how to make a felt skirt and unusual Christmas stockings, plus gift wrapping ideas for the holiday season.

Tickets must be secured in advance. They may be obtained at the Employee Activities Office for 25¢.

CONNECTICUT METAL WORKING TRADES OUTSTANDING APPRENTICE AWARD 1956

This Certificate is presented to
Scovill Manufacturing Co.
in recognition of its success in training

James Sutton

selected among the six outstanding Fourth-year Apprentices in the State-wide Metal Working Trades Apprentice Competition.

Competition Sponsors

CONNECTICUT STATE DEPARTMENT OF EDUCATION
BUREAU OF APPRENTICESHIP, U. S. DEPARTMENT OF LABOR
MANUFACTURERS ASSOCIATION OF CONNECTICUT
CENTRAL CONNECTICUT TOOL AND DIE ASSOCIATION
SOUTHERN CONNECTICUT TOOL AND DIE ASSOCIATION

John D. Dewhurst
Chairman, Competition Committee

Classified Ads

For Sale

Florence parlor 2-burner oil stove, \$15; Westinghouse automatic broiler, stand, timer, attachments, \$45. Call 3-3582.

White 3-panel roll-around garage door and fixtures, size 8' x 6'14". Call 4-4526 after 5:30 p. m.

Masco electric record player; children records, \$10. Call 3-5034 after 4 p. m.

Combination storm door, 34½ x 83"; 3 storm windows, 32 x 58½"; odd size storm window. Call 4-7731 after 7 p. m.

Portable Underwood typewriter. Call 3-6056.

Brown 2-burner oil parlor stove, 33 x 30", \$25; two 7.60 x 15 white wall tires, \$7 for both; sink and tub, \$7. Call 6-5606 after 5 p. m.

Apartment size gas stove, 4 burners; ¾ bed spring; new linoleum; 3 refrigerators. Call 5-3112 between 12 and 4 p.m. Monday through Thursday.

3 mahogany living room tables; 1 maple drop leaf table, seats 8 to 12. Call 5-6941 after 3:30 p.m.

Wooden storm windows: 6—36 x 55", 5—27½ x 51", 2—23¾ x 39"; 4 screens, 27½ x 51". Call 3-5392.

1950 Bendix Gyromatic electric washer, 1950 40" Universal electric range. Call 8-2245.

Ballerina length purple formal, velvet-teen bodice, nylon net skirt, worn once, size 10-12, \$20. Call 4-4794 after 5 p.m.

Small grand piano. Call 5-5982.

Coleman pot burner circulating parlor heater, chrome pipe, heats up to 5 rooms. Call 5-0814.

U.H.F. converter with bow tie antenna, \$18. Call 3-6372.

Baby's high chair and play pen. Call 3-2634.

Pair of nurse's shoes, size 6½AA, \$5; long black coat, size 38, \$5; short black coat, size 38, \$3. Call 6-3700.

Tuesday Golf League

The Tuesday Golf League announced the winners for the season. The team of Danaher-McGovern took first place with 11½ wins and 2½ losses. Kraft-O'Connell were runners-up with 12 wins and 3 losses.

Yearly low gross honors went to Howie Kraft with 37 and yearly low net to Jack Danaher with 27 points.

Set of bar-bells, various weight discs, up to 140 pounds; child's black and gold stencilled rocking chair; camel hair winter coat, size 10; 2 winter coats, 1 green, 1 wine, child's size 10. Call 3-8823.

1948 Chevrolet Fleetwood, 2 door, radio, heater, good tires, good running condition. Call 6-6917.

Rebuilt 275 gal. oil tank, \$22.50; leaky tanks rebuilt at \$17.00. Call CONgress 6-7271.

Boy's overcoat with zip-in lining, size 12, very good condition, \$6. Call 5-5528.

For Rent

4 unfurnished rooms on 1st floor, lower section of Baldwin St. Call 5-8265.

Three room apartment in Town Plot section, hot water, gas, electricity, garage. Call 4-7210.

Wanted To Buy

Accordion, 120 bass baby grand or 3/4 size. Call 5-6084.

Other

Light moving and rubbish removal. Call 5-9371.

Lost

Wrist watch lost from men's locker room in Tube Mill. Please return to Victor Paladino, ext. 380.

Three Succumb

GORDON MITCHELL, retired, died on November 8, 1956.

Mr. Mitchell came to Scovill in January, 1918, and had a continuous service record since July of the same year. Except for a short period in the Loading Room, he had always been in the Casting Shop, where he was serving as a scaleman when retired in October, 1947.

KARL KRIEGER, North Mill, died on November 10, 1956.

Mr. Krieger first came to Scovill in October, 1940, and had a continuous service record since August, 1945. Although he had served in various departments, most of his time was spent in North Mill Maintenance as a repair man and since January, 1955, in the Finishing Division as a band maker.

NEWELL F. HELMS, Wire Mill, died on November 13, 1956.

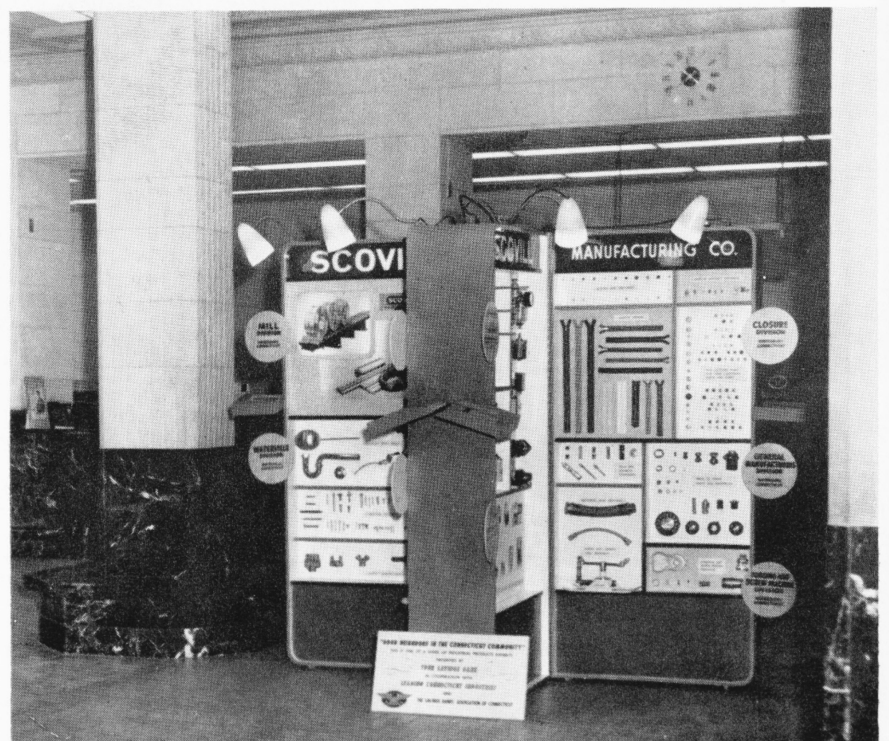
Mr. Helms first came to Scovill in May, 1929, and had a continuous service record since May, 1953. While employed at Scovill he served in the Rod Mill, North Mill, Tube Mill and, in 1954, went to the Wire Mill where he was serving as a wire draw block operator, single breakdown machine. He was forced to leave due to illness in June of this year.

Kids Hallowe'en Party

Over 300 children and grandchildren of Scovillites attended the annual Kiddies Hallowe'en Party at Doolittle Hall on October 29th. They had a wonderful time with a grand march, refreshments, movies and prizes.

Prize winners in the six-and-under age group were: prettiest—Kevin McKenna, Kathy McKenna and Lee Ann Conrad; funniest—Allen Cicchetti, Nick Cicchetti and Nancy Smith; most original—Tommie Morse, Joseph Calobro and Bobbie Kologe. In the seven-and-over age group: prettiest—Darlene Pierce, Geraldine Hellman and Mary Ellen Kiley; funniest—Ronald Murray, Janice Capone and Paul Gallucci; most original—Steven Jacovich, Susan Bergin and Judy Casey.

Savings Banks To Show Scovill Exhibit



Now being displayed at the Waterbury Savings Bank is an exhibit featuring the various products made by Scovill and its divisions. This display will be shown in approximately 40 different savings banks in Connecticut by arrangement with the Mutual Savings Banks Association of Connecticut. Pamphlets describing operations of Scovill are available to the public at the exhibit.

POSTMASTER—If addressee has removed and new address is known, notify sender. Dept. B, on Form 3547, postage for which is guaranteed by the sender.

Published by
SCOVILL MANUFACTURING COMPANY
99 Mill Street, Waterbury, Conn.
Return Postage Guaranteed

Sec. 34,66, P. L. & R.
U. S. POSTAGE
PAID
WATERBURY, CONN.
PERMIT NO. 123